

@UbX`≠bg] [\ hg'F Ydcfh

A]bbYgcHU#8 cX[Y`7 ci bhm
(("% (- ž!- &", +&*
7 cbWŁfX`#&,
%\$, B`#%+K

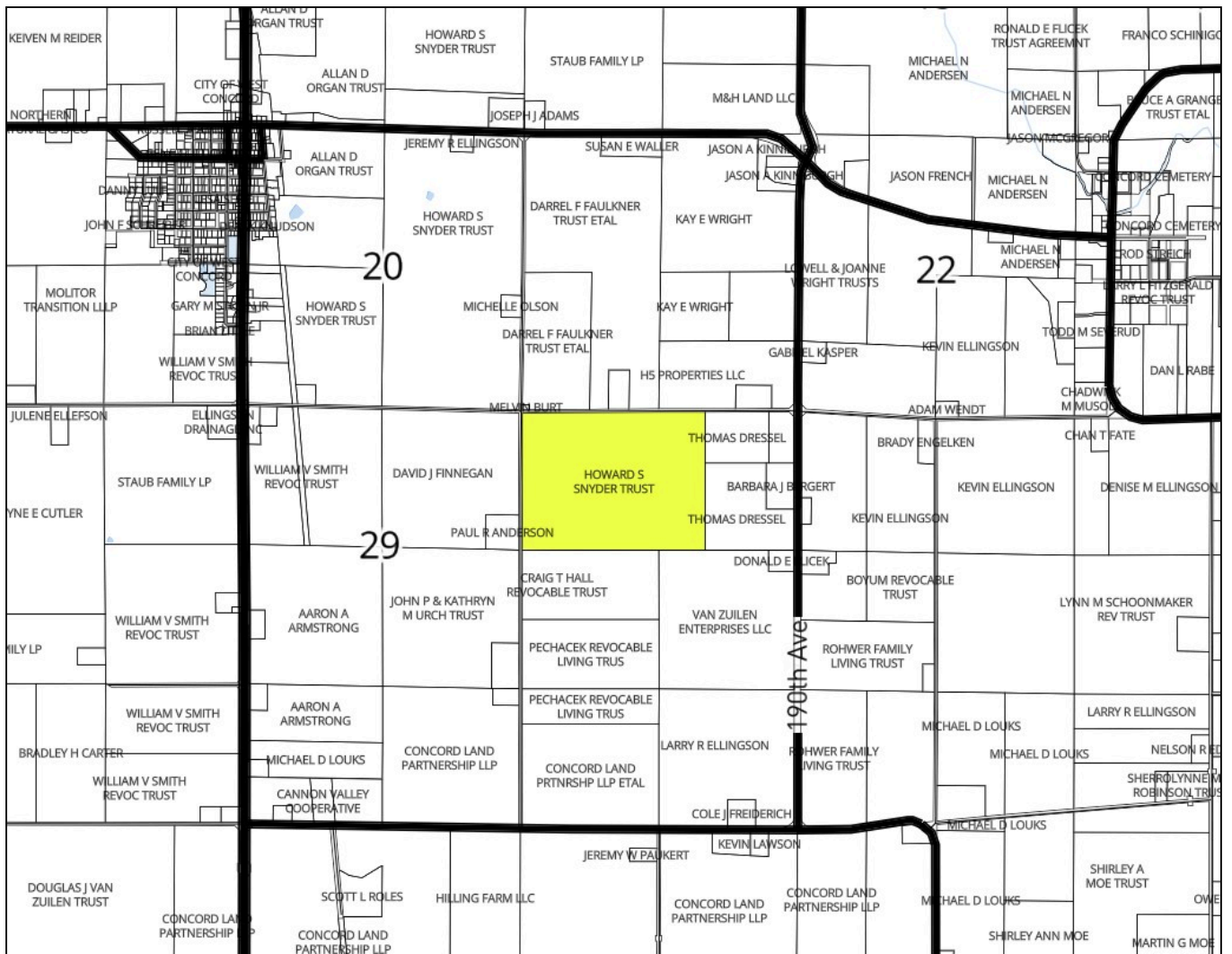
Plat Map



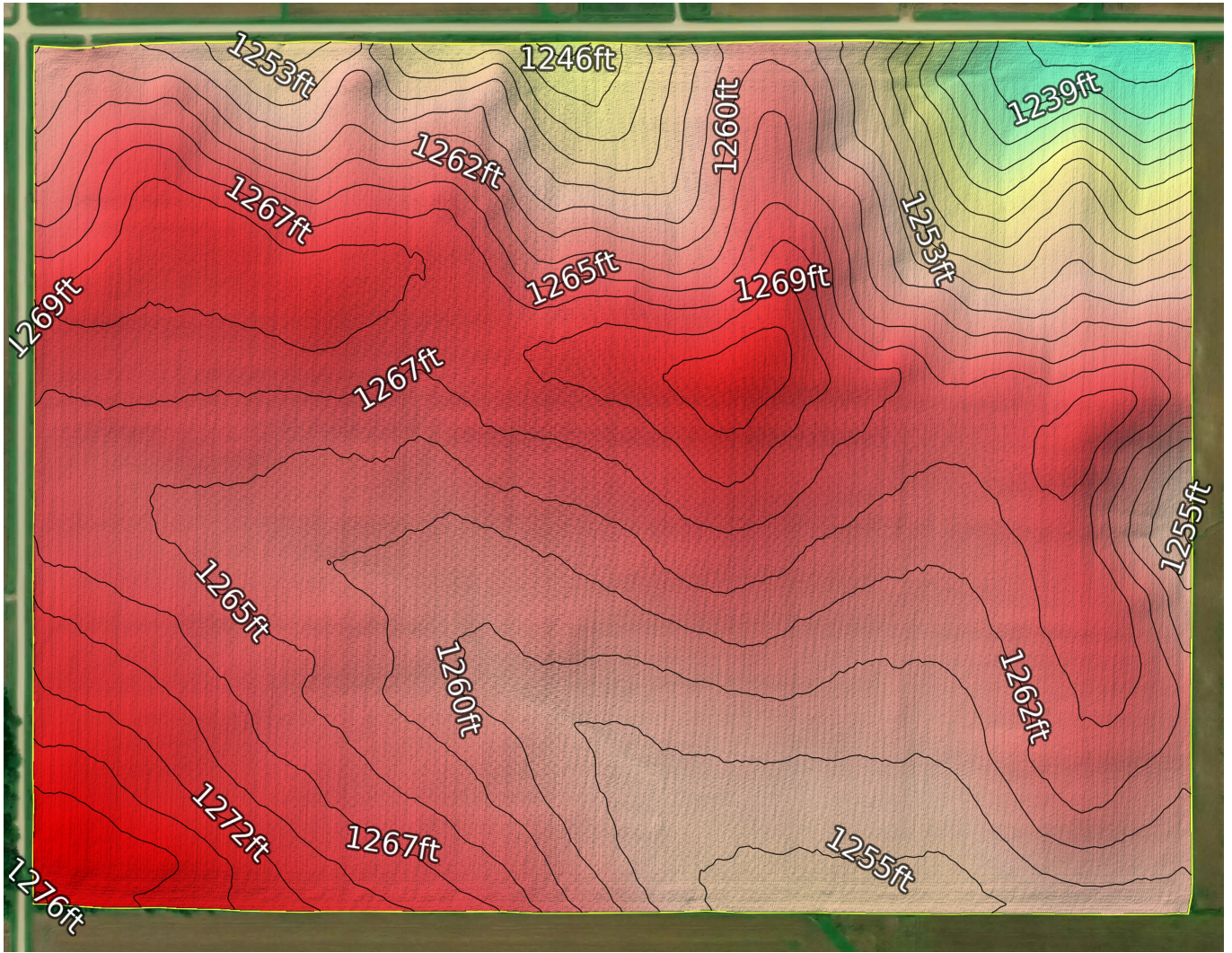
108N

Concord

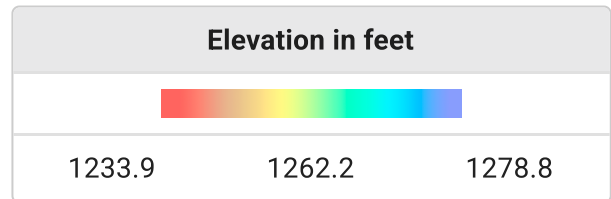
17W



Topography



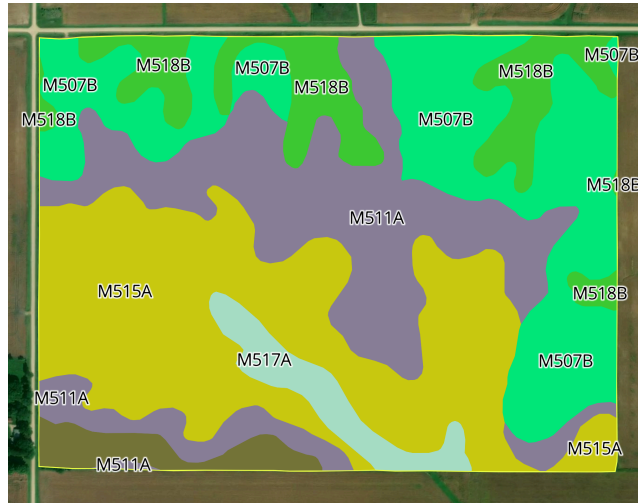
Minimum Elevation	1233.9 feet
Maximum Elevation	1278.8 feet
Mean Elevation	1262.2 feet
Standard Deviation	7.1 feet
Elevation Range	45.0 feet
Contour Interval	20 feet



Data Source: AWS Open Data Registry - USGS 3DEP

Minnesota / Dodge County
44.1349, -92.8726
Concord / 28
108N / 17W
208.31 acres

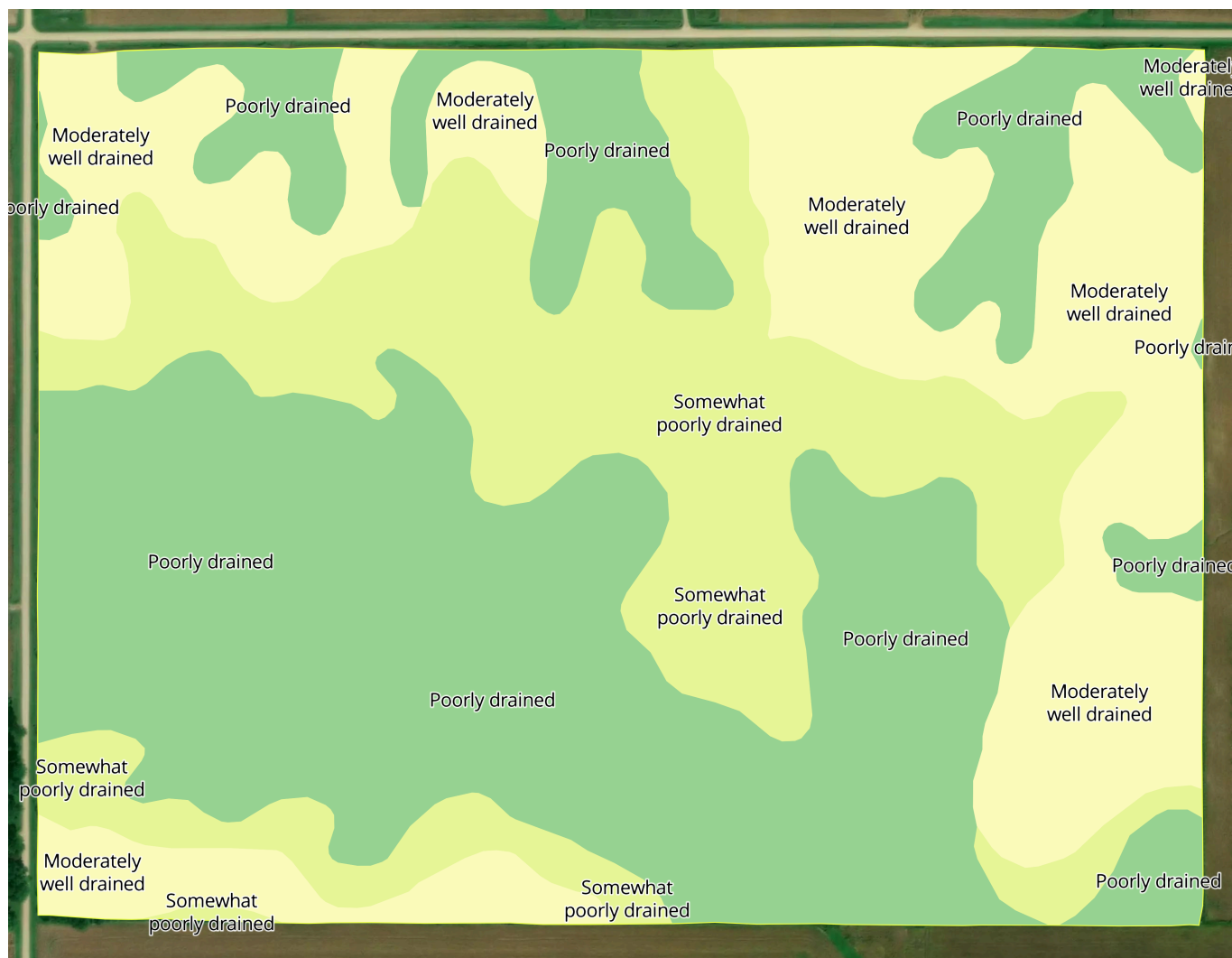
Soil Map



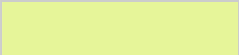


Soil Code	Soil Description	Acres	Drainage Class	CPI	WT Depth
M515A	Tripoli clay loam, 0 to 2 percent slopes	67.1	Poorly drained	87	N/A
M511A	Readlyn silt loam, 1 to 3 percent slopes	53.3	Somewhat poorly drained	100	11.8
M507B	Marquis silt loam, 2 to 6 percent slopes	51.7	Moderately well drained	99	24.0
M518B	Clyde-Floyd complex, 1 to 4 percent slopes	21.4	Poorly drained	92	N/A
M517A	Clyde silty clay loam, 0 to 3 percent slopes	8.3	Poorly drained	86	N/A
M507A	Marquis silt loam, 1 to 3 percent slopes	6.5	Moderately well drained	100	11.8
Total Acres				208.3	
CPI Weighted Average				94.2	

Data Source: NRCS Soil Survey

Drainage Classification



Key	Drainage Class	Acres(%)
	Poorly drained	46.00%
	Moderately well drained	28.00%
	Somewhat poorly drained	26.00%

Data Source: NRCS Soil Survey

Minnesota / Dodge County
 44.1349, -92.8726
 Concord / 28
 108N / 17W
 208.31 acres

TERRAIN
 Generated: 4/30/2026

Tile Map



Key	Type	Line Type	Total Length (ft)
	4 inch	solid	163,785.4
	5 inch	solid	5,594.1
	6 inch	solid	1,217.9
	8 inch	solid	1,155.5
	10 inch	solid	686.3
Total			172,439.2

Minnesota / Dodge County
 44.1349, -92.8726
 Concord / 28
 108N / 17W
 208.31 acres

Wetland



Key	Classification Code	Type	Acres
	R4SBC	Riverine	0.54
Total			0.54

Data Source: US Fish & Wildlife Service - National Wetland Inventory

Wetland data shown is for planning purposes only; please contact your local USDA NRCS office for an official wetland determination.

Minnesota / Dodge County
44.1349, -92.8726
Concord / 28
108N / 17W
208.31 acres

TERRAIN
Generated: 4/30/2026



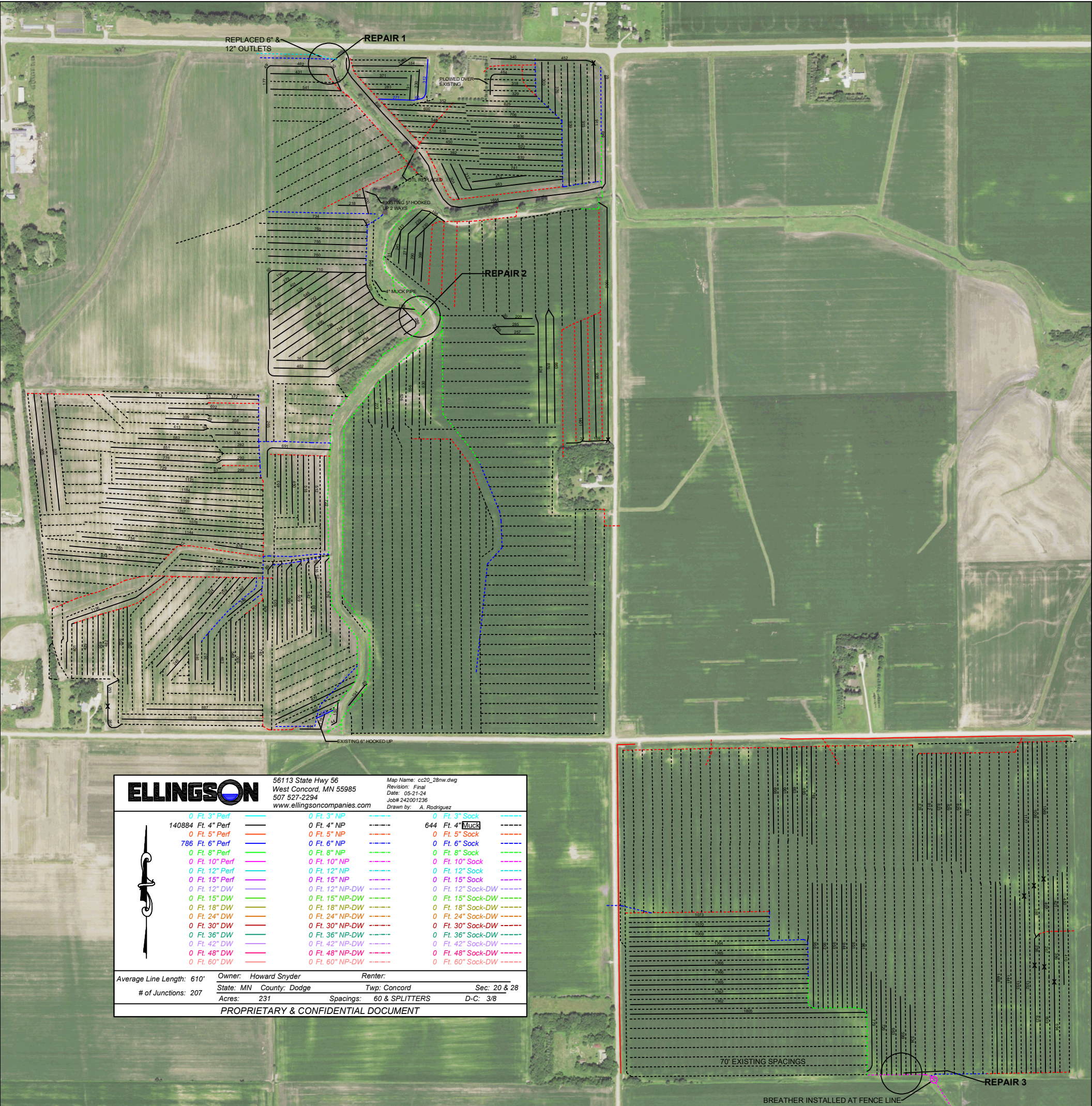
Data Source: 2008 FSA version of CLU boundaries

[Driving Directions](#)

44.1349, -92.8726



Minnesota / Dodge County
44.1349, -92.8726
Concord / 28
108N / 17W
208.31 acres



ELLINGSON		56113 State Hwy 56 West Concord, MN 55985 507 527-2294 www.ellingsoncompanies.com		Map Name: cc20_28nw.dwg Revision: Final Date: 05-21-24 Job# 242/001236 Drawn by: A. Rodriguez	
0 Ft. 3" Perf	0 Ft. 3" NP	0 Ft. 3" Sock	140884 Ft. 4" Perf	0 Ft. 4" NP	644 Ft. 4" MUCK
0 Ft. 5" Perf	0 Ft. 5" NP	0 Ft. 5" Sock	786 Ft. 6" Perf	0 Ft. 6" NP	0 Ft. 6" Sock
0 Ft. 8" Perf	0 Ft. 8" NP	0 Ft. 8" Sock	0 Ft. 10" Perf	0 Ft. 10" NP	0 Ft. 10" Sock
0 Ft. 12" Perf	0 Ft. 12" NP	0 Ft. 12" Sock	0 Ft. 12" DW	0 Ft. 12" NP-DW	0 Ft. 12" Sock-DW
0 Ft. 15" Perf	0 Ft. 15" NP	0 Ft. 15" Sock	0 Ft. 15" DW	0 Ft. 15" NP-DW	0 Ft. 15" Sock-DW
0 Ft. 18" DW	0 Ft. 18" NP-DW	0 Ft. 18" Sock-DW	0 Ft. 24" DW	0 Ft. 24" NP-DW	0 Ft. 24" Sock-DW
0 Ft. 30" DW	0 Ft. 30" NP-DW	0 Ft. 30" Sock-DW	0 Ft. 36" DW	0 Ft. 36" NP-DW	0 Ft. 36" Sock-DW
0 Ft. 42" DW	0 Ft. 42" NP-DW	0 Ft. 42" Sock-DW	0 Ft. 48" DW	0 Ft. 48" NP-DW	0 Ft. 48" Sock-DW
0 Ft. 60" DW	0 Ft. 60" NP-DW	0 Ft. 60" Sock-DW			
Average Line Length: 610'	Owner: Howard Snyder	Renter:			
# of Junctions: 207	State: MN County: Dodge	Twp: Concord	Sec: 20 & 28		
	Acre: 231	Spacings: 60 & SPLITTERS	D-C: 3/8		
PROPRIETARY & CONFIDENTIAL DOCUMENT					

BREATHER INSTALLED AT FENCE LINE